

→ Waste water treatment

**AquaPur**<sup>®</sup>



 **WashTec**

# *AquaPur<sup>®</sup> – the effective filter concept for clean reclaimed water.*



**AquaPur<sup>®</sup> provides clean reclaimed water, economically and without chemicals.**

- **The quality of the water obtained complies with the requirements for car washing and excess water disposal in every aspect**
- **High filter capacity of 4 m<sup>3</sup>/hour**
- **Virtually 100% water recovery**
- **Without chemicals**
- **Compact design**
- **Easy to operate**

# AquaPur® – simple, economical.

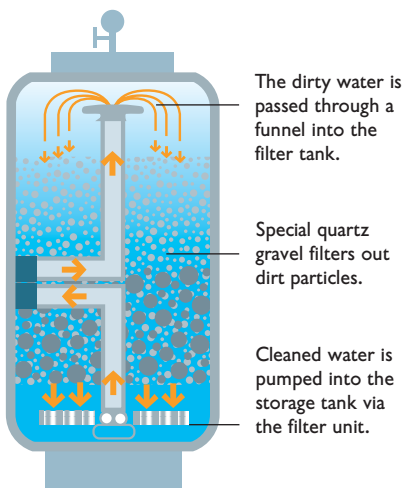
→ A chemical-free water reclaim system: AquaPur® is a tried and tested system based on mechanical filtering processes and the use of special quartz gravel. For car washing, it therefore provides a very efficient yet cost-effective way of reclaiming water.

→ Low running costs – economical to use: AquaPur® guarantees to filter out even the finest particles of dirt, fully automatically and without chemicals. Only at high wash rates of over 600 washes a month does the sedimentation of dirt particles need to be supported by flocculants.

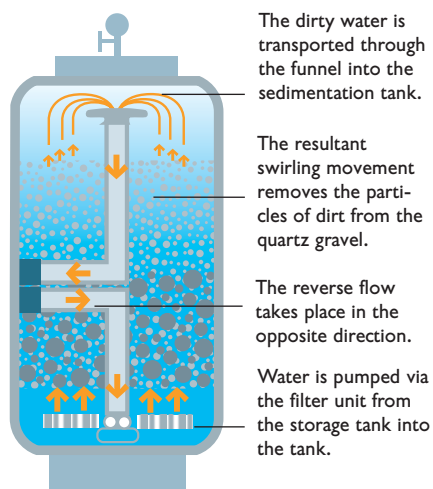
→ Compact design – easy operation: Thanks to its compact design, AquaPur® is ideal for installation in small machine rooms. The gravel filter, process water container and control box are all in one frame. In daily use, the system requires practically no maintenance and is easy to operate.

## How AquaPur® works.

### Filtering

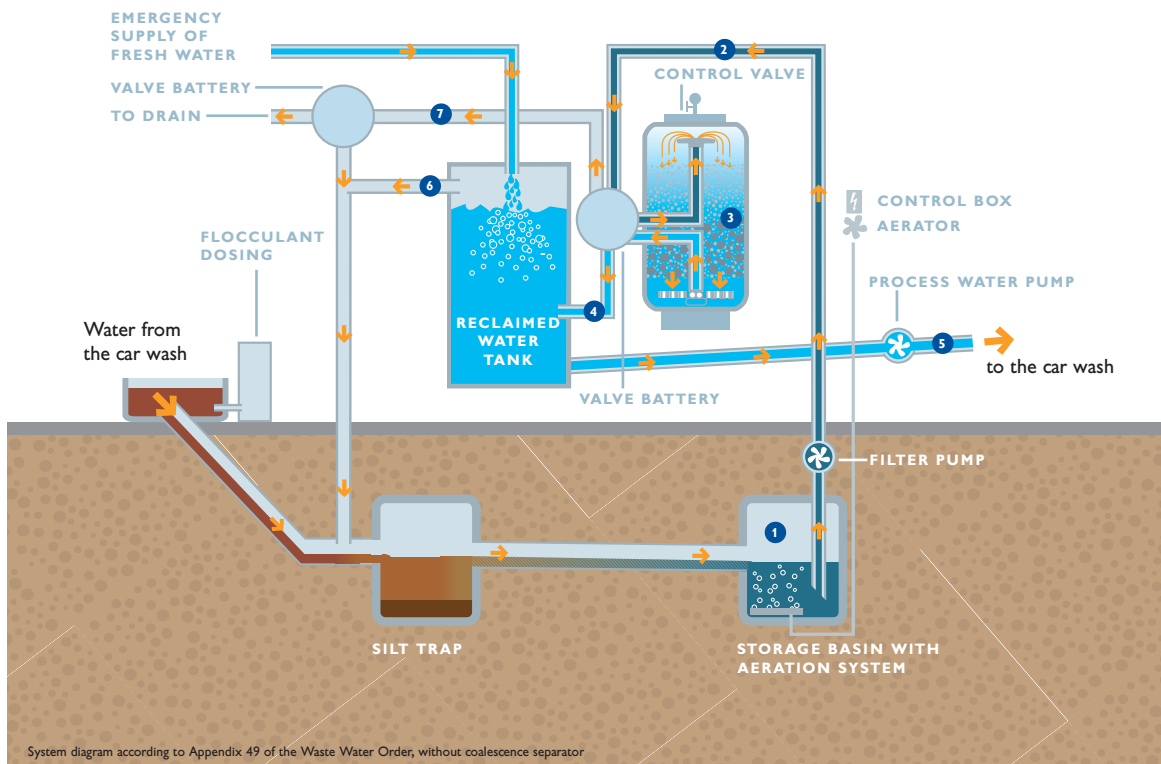


### Reverse flow



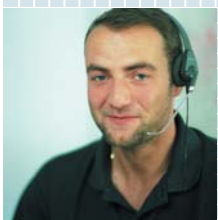
- Dirty water is pumped from the storage basin into the filter.
- The water flows through the filter from top to bottom. All dirt particles are retained there in the quartz gravel. The filtered water flows immediately into the storage tank.
- The system cleans itself through the reverse flow process. Water is pumped through the filter from the bottom to the top. Return flow water and the initial filtrate are passed into the sedimentation tank for sedimentation.

## The filtration cycle – removing dirt and saving fresh water.



- 1 After the silt trap, the waste water flows into a storage tank with aeration system which reliably prevents odours.
- 2 The pre-cleaned water is pumped into the filter.
- 3 In the filter operation, the water flows through one fine and one coarse gravel layer.
- 4 The cleaned water flows into the process water tank.
- 5 From the storage tank, the water is pumped into the car wash.
- 6 Water that is not required for use is returned to the circulation pipes.
- 7 Excess water is disposed of by discharging it into the drains.

# The "World of WashTec" has everything for your success.



- **Comprehensive range:** The right solution for your washing business can always be found.
  - **Roll-over car washes** for low, medium and high washing volumes
  - **Conveyor tunnel systems** with modular design for all sizes and all requirements
  - **Commercial vehicle washes** for washing companies and in-house requirements
  - **Self-service washing equipment** with modular design for all needs and different location sizes
  - **Water treatment** – chemical-free and environmentally friendly
- **Rapid service** 250 engineers in the field throughout Germany – **always in your neighbourhood.**
- **Customized financing plans:** We will promote your business at attractive conditions.
- **Reliable experience:** Innovative car washing technology for more than 40 years. **More than 2 million cars are cleaned in WashTec washing facilities every day.**
- **Value for money services:**
  - **Site analysis** for optimum sizing of your business
  - **Cost-effectiveness calculations** help with your planning
  - **Sales training for staff** increases revenue
- **Tested quality** EN ISO 9001, 14001 certification – for your safety.